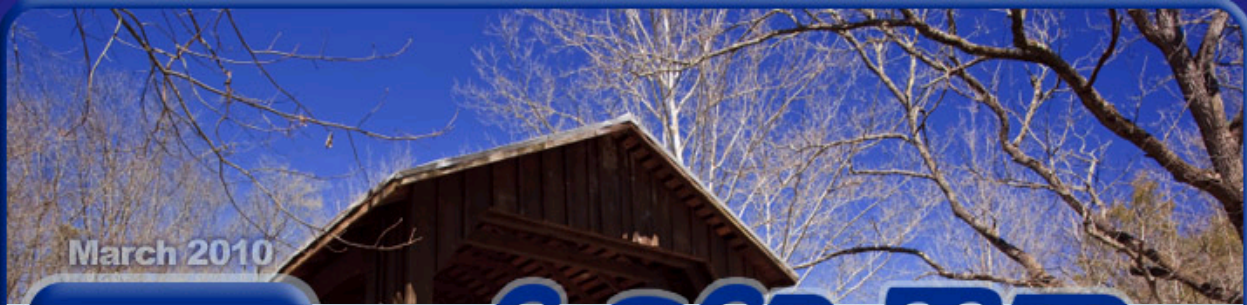


Trouble viewing this message? Click here.



March 2010

THE GAS GRABBER

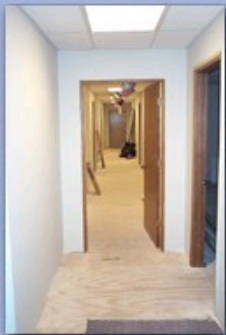
The Gas Grabber is a monthly publication of R. L. Laughlin & Co., Inc. consulting in chart integration and field services since 1970

in this issue:

- * RLLCO at OOGA
- * Web Demos Available
- * Label Speeds Turnaround
- * Employee Retiring

want to join the team?

Interested in working for the company? The latest job openings can be viewed on the [company website](#).



office expansion

As R. L. Laughlin & Co. continues to grow, adding new accounts and new employees, it has become necessary to add new office space. At the main office in Charleston, a whole new wing is nearing completion; when renovations are finished, RLLCO will have 33% more space for integrating your charts!

R. L. Laughlin & Co. at OOGA

As in past years, representatives of R. L. Laughlin & Company will be exhibiting at the 2010 winter meeting of the Ohio Oil and Gas Association, to take place March 17-19. Visitors to the booth will be treated to a demonstration of RLLCO's innovative electronic chart integration process. If you plan to attend, make sure you drop by and say hi, and bring any questions you might have about gas measurement!



Personalized Web Demos Available

Are you a potential customer looking for a demonstration of what RLLCO has to offer? How about an existing client needing support or wanting to learn advanced functionality in GMSweb? An employee would be thrilled to walk you through a free demonstration of what R. L. Laughlin & Co. has to offer! All you need is an Internet connection and a freely downloadable piece of software called GoToMeeting. Contact Tom Hunter at 304-776-7740 for more details.



New Label Speeds Turnaround

RLLCO's clientele continue to use the all-new DateSensor label to help speed turnaround on chart integration. The DateSensor features an array of blocks the chart changer can fill in to indicate date and time on/off. When R. L. Laughlin & Co. receives the chart, its RapidImager scanner software reads the label without need of a human. The DateSensor is compatible with all types and sizes of charts, including orifice, direct, temperature, and fast/slow.



birthdays:



Feb 13
**Bonnie
Runion**



Mar 15
**Andrea
Gorrell**



Mar 30
**Gary
Sergent**

contact us:

**R. L. Laughlin &
Company, Inc.**
5012 W Washington St
Charleston, WV 25313
304-776-7740
304-776-7740 (fax)
www.rllco.com

RLLCO Fab Shop
Saint Albans, WV
304-201-2559



R. L. Laughlin & Co.,
Inc. is an American-
owned company.

Employee Retiring: Bonnie Runion

Employee Bonnie Runion retired in February after thirteen years with R. L. Laughlin & Company. Almost since her arrival in June 1997, Bonnie has worked as a mail clerk: filing charts, sending out charts requested by clients for audit, and in general just keeping track of many thousands of charts!

"I've enjoyed watching the company grow," she says, "And I'll miss working with the people here. They've become a second family to me." Bonnie plans to spend her newfound time gardening, traveling with her husband, and spoiling her granddaughter.

